

Bear Creek Watershed Association

Approved: August 14, 2013

Policy 13 Draft Watershed Boundary

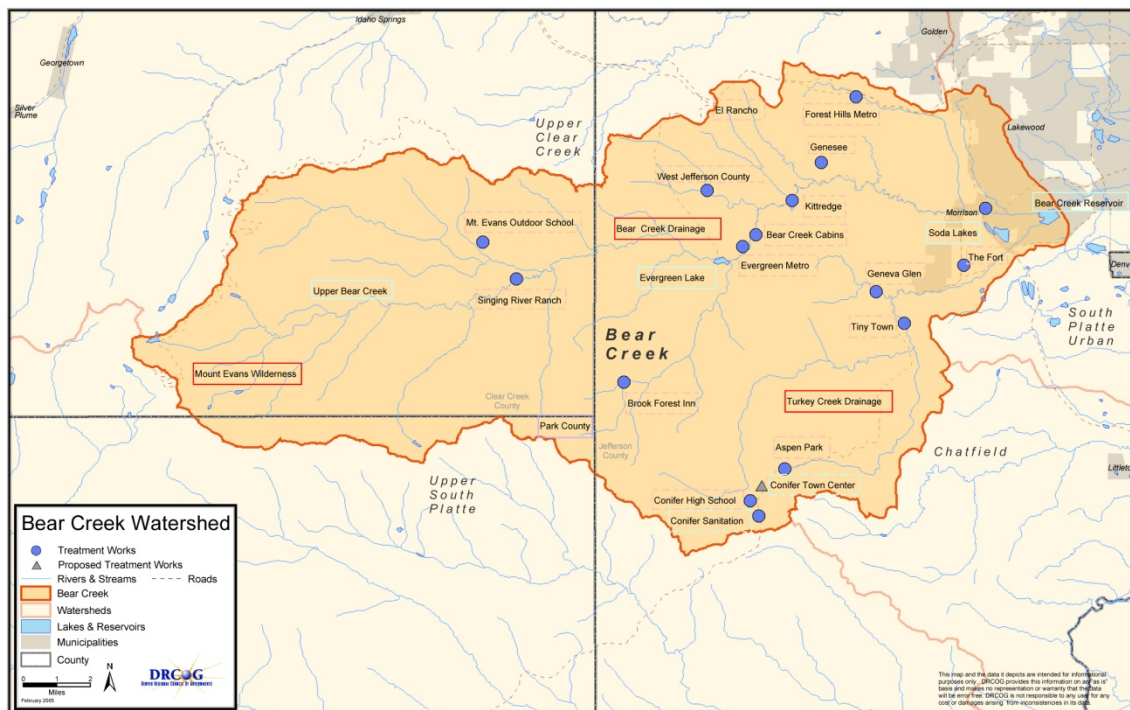


Statement of Basis and Purpose

The Bear Creek Watershed is a specific geographic area identified in the Bear Creek Watershed State Control Regulation (Regulation #74, 5 CCR 1002-74) (Control Regulation) requiring special water quality management. The watershed includes all tributary water flows that discharge into Bear Creek Reservoir. The watershed extends from the Mount Evans Wilderness on the western end (Clear Creek County) to the Town of Morrison on the eastern end (Jefferson County). A small portion of the upper watershed on the southern boundary extends into Park County.

The Control Regulation defines the watershed as:

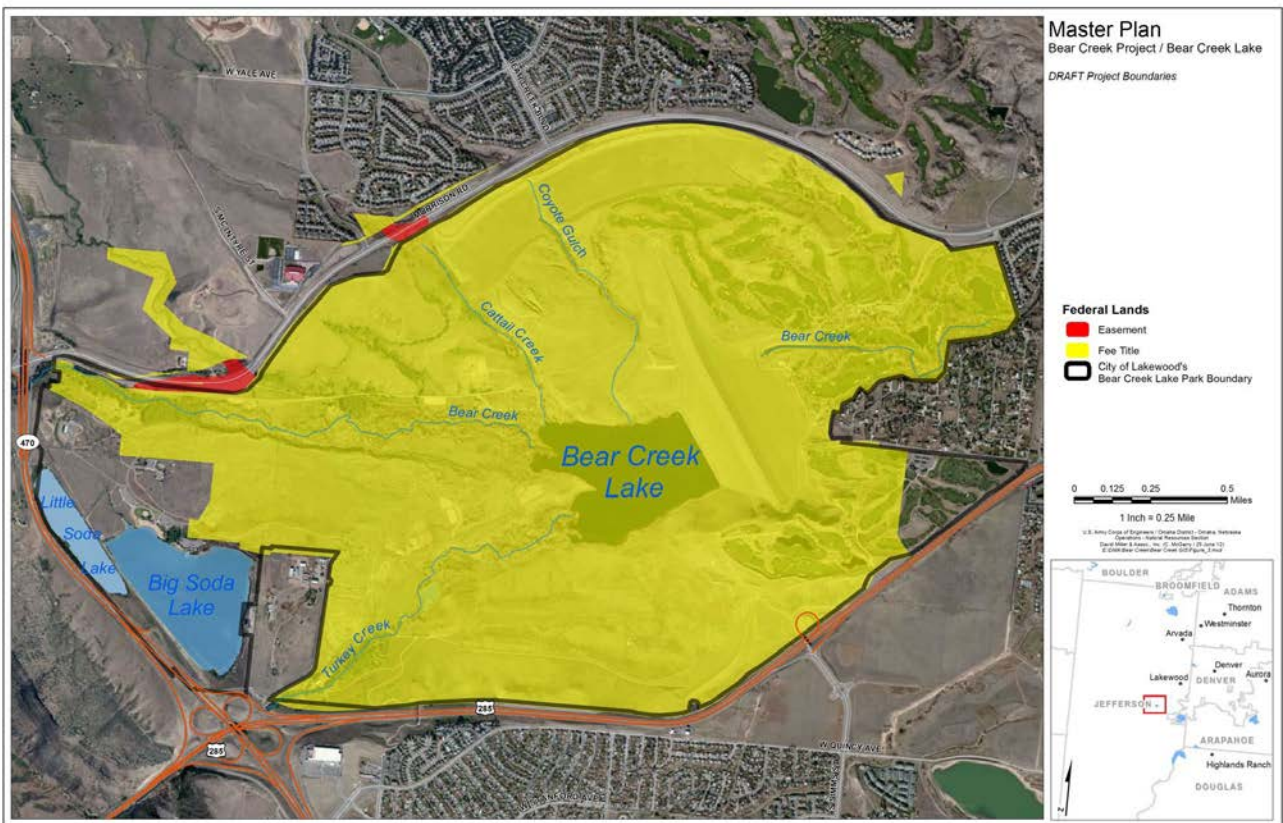
"Bear Creek Watershed" includes Bear Creek and all tributaries, Turkey Creek and all tributaries, and Bear Creek Reservoir in Jefferson County. The Bear Creek Watershed extends into Clear Creek and Park Counties, Colorado. The watershed area is delineated in Figure 1 attached to this regulation.



The version of the map in the control regulation was developed by the Denver Regional Council of Governments as an illustrative map for the adopted regulation on July 6, 1992. The map was based on the hydrologic drainage features for the upper watershed from hard copy maps. The lower extent of the watershed was loosely associated with the USGS HUC boundary below the Bear Creek Reservoir. The lower discharge trace was included in the original boundary map.

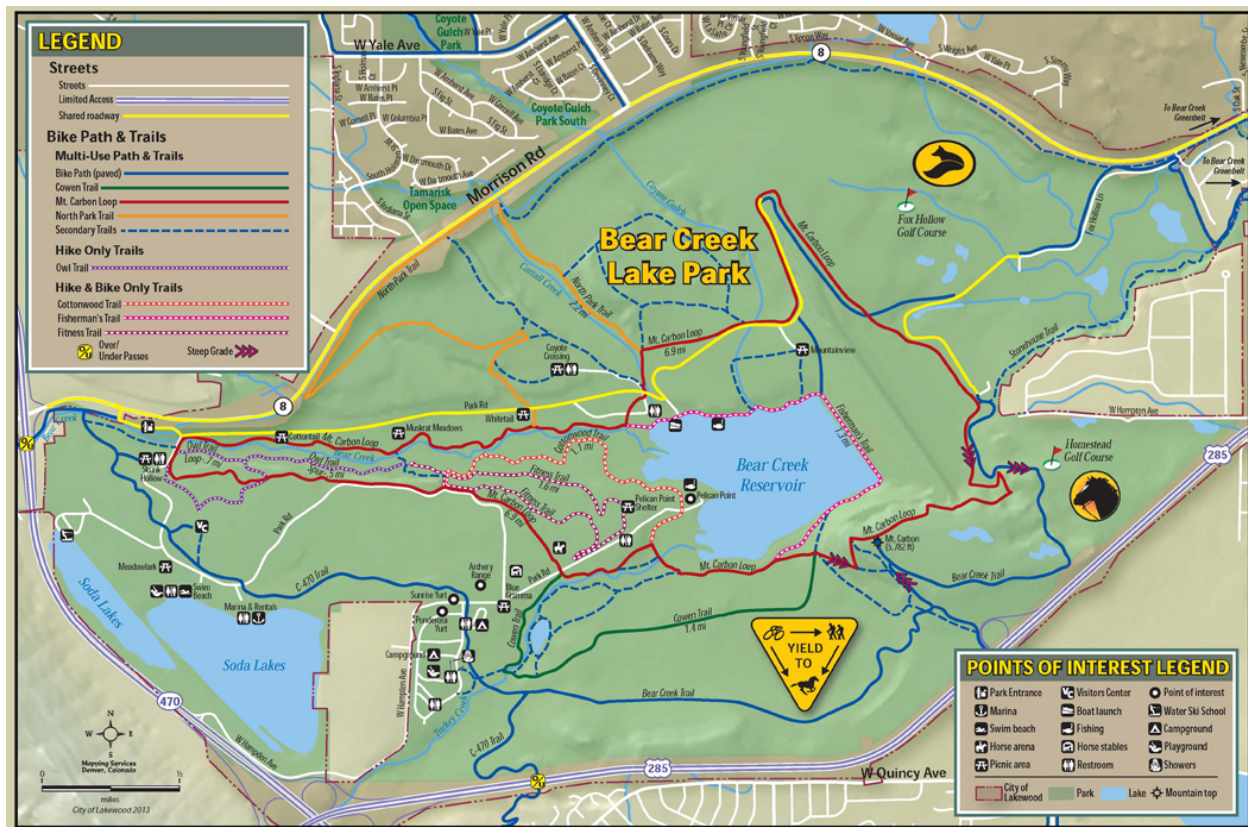
Subsequent to the original mapping, several lower boundary features were determined to be best served if they were located within the Bear Creek Watershed boundary. The revised mapping recognized the Fox Hollow Golf course as being within the boundary of Bear Creek so that it could be evaluated for water quality affects through the Association water quality monitoring program. The Association in discussions with the U.S. Army Corps of Engineers determined that the Bear Creek Master Plan boundary should be included within the watershed boundary, including the region hydrologically connected to the dam structure. The City of Lakewood as a member requested the entire Bear Creek Lake Park be included within the boundary. Improved digital GIS mapping information was developed by DRCOG and used to better define the entire boundary conditions for the watershed.

The U.S. Army Corps of Engineers, Omaha District, master plan for the Bear Creek Dam and Lake Project (Design Memorandum No. PB-10) defines the federal project and Bear Creek Lake Park boundaries, which includes the golf course and hydrologic extent of the dam project. This boundary is used by the Bear Creek Watershed Association to define the lower boundary of the Bear Creek Watershed below Bear Creek Reservoir.



An updated version of the watershed map with boundary corrections (inclusion of the golf course and match the Bear Creek Lake Park boundary) was developed for the amended regulation on April 12, 2005, but was not included due to state noticing issues. The Association had an understanding with the WQCD that a revised map would be included at the next update to the control regulation. Since the control regulation has not been updated, the map remains unchanged. Although the working definition of the watershed has been updated and used by the Association

The entire Bear Creek Lake Park is mapped as being within the Bear Creek Watershed. See the trail map below.



The DRCOG rescinded their planning agency status and that role reverted back to the state. The management agency designation remained for the Association. However, the DRCOG did not retain the more detailed watershed maps being used by the Association or make them available to the Association.

In 2011, the Association contracted to get a new version of a watershed map (2011). This updated map includes all corrections and agreements made by the Association to define the working boundary conditions.

Watershed Boundary Policy

The Bear Creek Watershed Association includes a watershed boundary that includes all hydrologic drainage from the Bear Creek and Turkey drainages from the headwaters to a boundary below the Bear Creek Reservoir that includes the Fox Hollow Golf Course, Homestead Golf Course, Bear Creek Lake Park boundary and the hydrologically connected federal project boundaries as defined in the U.S. Army Corps of Engineers, Omaha District, master plan (as periodically updated). The lower watershed boundary ends where Bear Creek flows under South Kipling Parkway (west side of road). The lower watershed includes portions of the developments on Green Mountain. The watershed includes the Coyote Gulch drainage from the headwaters into Bear Creek Reservoir.

The watershed boundary map as adopted by the Association is shown in the following map. At the next opportunity, the Association will recommend to the WQCC to update the map contained in the control regulation with the new boundary map or a version as adopted by major vote of the Association membership.

